

# RISE UP (LAZARUS)

Words and Music by  
MADISON JOHNSON, LOGAN CAIN,  
TAYLOR MATZ, ETHAN HULSE  
and NICK SCHWARZ

Arranged and Orchestrated by  
Carson Wagner

**53** Confidently ♩ = 87

B $\flat$                        $\text{A}\flat 2$   
                                    F                                      E $\flat$                                       C $\text{m}7$

*mp*

## TRIO (SAT)

5

*mf* Tenor

In the dark\_ and all\_ a - lone, grow - ing com - f'ter - ble, \_

B $\flat$  $\text{A}\flat 2$   
F

7

*add* Alto

\_ are\_ you too\_ scared\_ to move\_ and walk\_ out of\_ this

E $\flat$ C $\text{m}7$

9 *Tenor*

tomb? Bur - ied un - der - neath the lies that you be - lieved,

B $\flat$   $\frac{A\mathbb{b}2}{F}$

11 *add Alto*

safe and sound, stuck in the ground, too lost to be

E $\flat$  Cm7

13 *add Soprano* 54 0:35 *f*

found. You're just a - sleep, and it's time to leave. Come on and

A $\flat$  E $\flat$  B $\flat$  A $\flat$  E $\flat$

16 *TRIO*

rise up. Take a breath, you're a - live now. Can't you hear\_ the\_\_

*f* *CHOIR*

Rise up, live now.

*f*

B $\flat$  A $\flat$ 2  
F

18

voice of Je - sus call - ing us out\_\_ from the grave like Laz - a - rus?\_ You're

Voice of Je - sus call - ing us out\_\_ from the grave like Laz - a - rus?

*Ten. only*

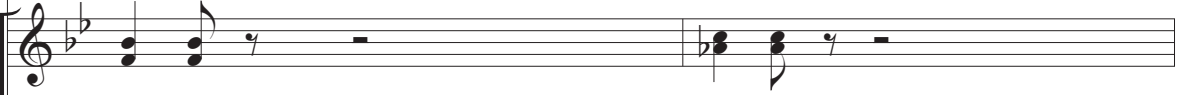
*add Basses*

E $\flat$  Cm7

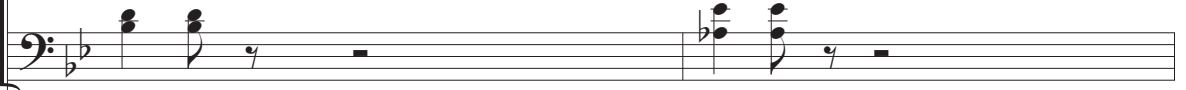
20



brand new, the pow'r of death \_ could-n't hold you. Can't you hear \_ the \_



Brand new, hold you.



B $\flat$  A $\flat$ 2  
F

Piano accompaniment for measures 20-23. The right hand plays chords, and the left hand plays a simple bass line. A large watermark 'ILLEGAL TO COPY - PREVIEW ONLY' is overlaid on the page.

22



voice of Je-sus call-ing us out \_ from the grave like Laz-a-rus?



Voice of Je-sus call-ing us out \_ from the grave like Rise up!

*Ten. only*



*add Bases*

E $\flat$  Cm7 B $\flat$

Piano accompaniment for measures 24-27. The right hand plays chords, and the left hand plays a simple bass line. A large watermark 'ILLEGAL TO COPY - PREVIEW ONLY' is overlaid on the page.

25

Out \_\_\_ from the grave like Laz - a - rus.

Rise up! Rise up! Out \_\_\_ from the grave like Laz - a - rus.

$\Delta b2$   
F Eb Cm7

28 *Tenor*

When He said your name, \_\_\_ the thing that filled your veins \_\_\_

B $\flat$   $\Delta b2$   
F

*mp*

30 *add Alto*

\_\_\_ was more than blood. It's the kind \_\_\_ of love that wash - es sin \_\_\_ a - way. \_\_\_

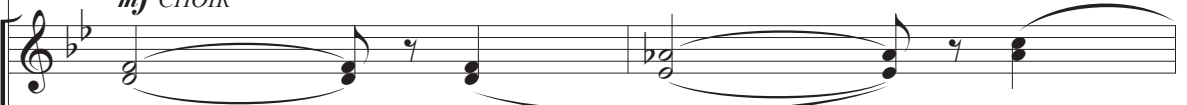
E $\flat$  Cm7

*add Soprano*

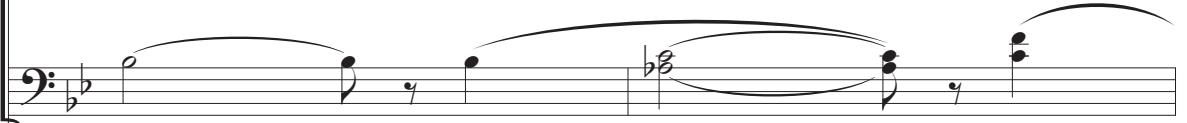
32



Now the door is o - pen wide and the stone's been rolled a - side.

*mf* CHOIR

Hoo Hoo Oh



Bb

Ab2  
F

34



The old is gone, the Light has come. So, come on and

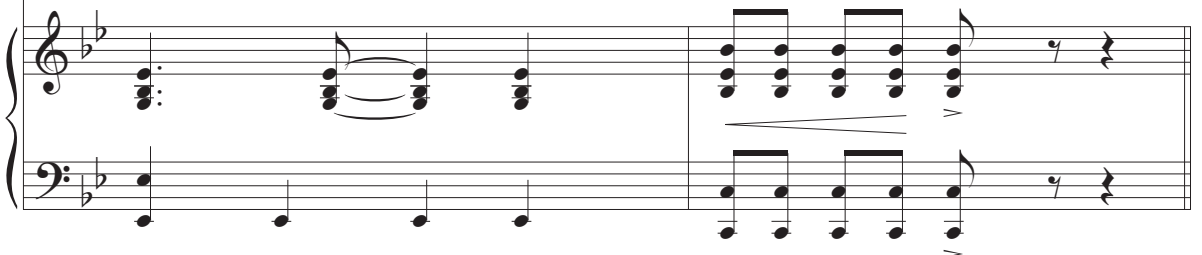


The Light has come!



Eb

Cm7



36

rise up. Take a breath, you're a - live now. Can't you hear\_ the\_\_

Rise up, live now.

*f*

B $\flat$  Ab $\flat$ 2  
F

38

voice of Je - sus call - ing us out \_\_\_ from the grave like Laz - a - rus? \_ You're

Voice of Je - sus call - ing us out \_\_\_ from the grave like Laz - a - rus?

E $\flat$  Cm7



brand new, the pow'r of death could-n't hold you. Can't you hear the —

Brand new, hold you.



voice of Je-sus call-ing us out from the grave like Laz-a-rus?

Voice of Je-sus call-ing us out from the grave like Rise up!



45

He's

Rise up! Rise up! Out from the grave like Laz - a - rus.

*Ab2*  
*F* *Eb* *Cm7*

48

call-ing us to walk out of the dark. He's giv-en us new res-ur-rect-ed hearts.

*Bb(no 3)* *Eb* *Bb(no 3)*  
*mp*

51

*add Alto*

He's call-ing us to walk out of the dark. He's

*Eb* *Bb(no 3)* *Eb*

54

*add Tenor*

giv-en us \_ new res-ur-rect-ed hearts. — He's call-ing us \_ to walk out of \_ the dark.

*f* **CHOIR**

He's call-ing us \_ to walk out of \_ the dark.

B $\flat$ (no 3)E $\flat$ B $\flat$ (no 3)

*mf*

57

— He's giv-en us \_ new res-ur-rect-ed hearts, — oh.

— He's giv-en us \_ new res-ur-rect-ed hearts, — oh.

E $\flat$ B $\flat$ (no 3)E $\flat$

60

Rise up. Take a breath, you're a - live now. Can't you hear the\_ voice of Je-sus call-ing us out.

Rise up, live now. Voice of Je-sus call-ing us out.

*DRUMS!*

63

— from the grave like Laz - a - rus?\_ You're brand new, the pow'r of death could-n't

— from the grave like Laz - a - rus? Brand new,

B $\flat$ (no 3)

57 2:58

65

hold you. Can't you hear the voice of Je - sus call - ing us out

hold you. Voice of Je - sus call - ing us out

Ab2  
F

Eb

67

from the grave like Laz - a - rus? Take a breath, you're a

from the grave like Rise up,

Cm7

Bb

*f*

69

live now. Can't you hear\_ the\_\_\_ voice of Je - sus call - ing us out \_

live now. Voice of Je - sus call - ing us out \_

Ab2  
F

Eb

71

\_\_\_ from the grave like Laz - a - rus?\_ You're brand new, the pow'r of death could-n't

\_\_\_ from the grave like Laz - a - rus? Brand new,

Cm7

Bb  
D

The image shows a page of a musical score, page 129. It contains three systems of music. The first system (measures 69-70) features two vocal staves and a piano accompaniment. The vocal lines have lyrics: "live now. Can't you hear\_ the\_\_\_ voice of Je - sus call - ing us out \_" and "live now. Voice of Je - sus call - ing us out \_". The piano accompaniment includes chords labeled "Ab2" and "F" above the first measure, and "Eb" above the second measure. The second system (measures 71-72) continues the vocal lines with lyrics: "\_\_\_ from the grave like Laz - a - rus?\_ You're brand new, the pow'r of death could-n't" and "\_\_\_ from the grave like Laz - a - rus? Brand new,". The piano accompaniment includes chords labeled "Cm7" above the first measure and "Bb" and "D" above the second measure. A large, semi-transparent watermark "ILLEGAL TO COPY" is oriented vertically across the center of the page.

73

Musical staff for voice part, measure 73. The staff shows a vocal line with lyrics: "hold you. Can't you hear \_ the \_ voice of Je - sus call - ing us out \_".

hold you. Can't you hear \_ the \_ voice of Je - sus call - ing us out \_

Musical staff for voice part, measure 74. The staff shows a vocal line with lyrics: "hold you. Voice of Je - sus call - ing us out \_".

hold you. Voice of Je - sus call - ing us out \_

Musical staff for piano accompaniment, measure 73. The staff shows a piano line with lyrics: "hold you. Voice of Je - sus call - ing us out \_".

Musical staff for piano accompaniment, measure 74. The staff shows a piano line with lyrics: "hold you. Voice of Je - sus call - ing us out \_".

Chord markings:  $A\flat 2$ ,  $F$ ,  $E\flat$

75

Musical staff for voice part, measure 75. The staff shows a vocal line with lyrics: " \_ from the grave like Laz - a - rus?". The word "higher!" is written above the staff.

\_ from the grave like Laz - a - rus?

Musical staff for voice part, measure 76. The staff shows a vocal line with lyrics: " \_ from the grave like Laz - a - rus? Rise up!".

\_ from the grave like Laz - a - rus?

Rise up!

Musical staff for piano accompaniment, measure 75. The staff shows a piano line with lyrics: " \_ from the grave like Laz - a - rus? Rise up!".

Musical staff for piano accompaniment, measure 76. The staff shows a piano line with lyrics: " \_ from the grave like Laz - a - rus? Rise up!".

Chord markings:  $Cm7$ ,  $B\flat$ ,  $A\flat 2$ ,  $F$

78

78

Out \_\_\_\_ from the grave like Laz - a - rus.

Rise up! Out \_\_\_\_ from the grave like Rise up!

*E $\flat$*  *Cm7* *B $\flat$*

81

81

Out \_\_\_\_ from the grave like Laz - a - rus! *higher!*

Rise up! Rise up! Out \_\_\_\_ from the grave like Laz - a - rus! *higher!*

*A $\flat$ 2* *F* *E $\flat$*  *Cm7*