

I Am Not Ashamed

Words and Music by
DAWN THOMAS
Arranged by Cody Howard McVey

56

Gospel ballad (♩ = 68)

SOLO (freely)

p

We're an

5

an-chor for those who are hurt-ing. We're a har-bor for those who are lost.

8

Some-times it's not al-ways eas-y bear-ing

11

Cal-va-ry's cross. We've been rid-i-culed by those who don't

Gm9 $B\flat^2$ C C7 F2

14

know Him, and mocked by those who don't be-lieve. Still I

Cm9 F13 Bmaj7 E \flat 13 E \flat 13#11

17

love stand-ing up for my Je-sus 'cause of

Dm9 G13

19

57 1:03
all that He's done for me. That's why

Gm9 C7sus(b^9)

21

Musical staff for voice part 1, measures 21-22. The melody consists of eighth and quarter notes in a descending line.

I am not a - shamed of the Gos - pel, — the
mp CHOIR: *unison*

Musical staff for voice part 2, measures 21-22. The melody is identical to the first voice part.

I am not a - shamed of the Gos - pel, —

Musical staff for piano accompaniment, measures 21-22. The left hand plays a steady eighth-note accompaniment, while the right hand plays chords.

F2

Gm
F

Piano accompaniment for measures 21-22. The right hand has a melodic line with chords, and the left hand has a rhythmic accompaniment. A large watermark is visible over the page.

23

Musical staff for voice part 1, measures 23-24. The melody continues with eighth and quarter notes.

Gos-pel of Je - sus Christ. I am not a-fraid to be count-
div. *unison*

Musical staff for voice part 2, measures 23-24. The melody is identical to the first voice part.

Gos-pel of Je - sus Christ. — I am not a-fraid to be count-
div. *unison*

Musical staff for piano accompaniment, measures 23-24. The left hand continues with eighth-note accompaniment, and the right hand plays chords.

B \flat
C

C7

F

Gm
C

F

Piano accompaniment for measures 23-24. The right hand has a melodic line with chords, and the left hand has a rhythmic accompaniment. A large watermark is visible over the page.

26



Musical staff for vocal line at measure 26, showing notes and rests.

- ed, ___ but I'm will-ing to give my life. ___ See, I'm read-



Musical staff for vocal line at measure 27, showing notes and rests.

- ed, ___ but I'm will-ing to give my life. ___

div.



Musical staff for vocal line at measure 28, showing notes and rests.

Gm
F

Bb
C

C7b9

F



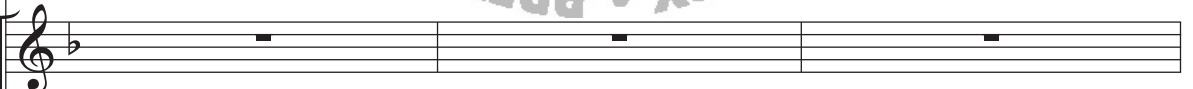
Piano accompaniment for measures 26-28, showing chords and bass line.

29



Musical staff for vocal line at measure 29, showing notes and rests.

- y to be all He wants me to be. ___ Give up the wrong for ___ the



Musical staff for vocal line at measure 30, showing notes and rests.



Musical staff for vocal line at measure 31, showing notes and rests.

Fmaj7

Cm
F

B9b5

Bbmaj7



Piano accompaniment for measures 29-31, showing chords and bass line.

32



right. I am not a-shamed of the Gos - pel. _____



I am not a-shamed,

Piano accompaniment for measures 32-34. The right hand features a melodic line with chords Eb9, Eb9/Db, F/C, and Gm/C. The left hand provides a rhythmic accompaniment. A large watermark is visible across the page.

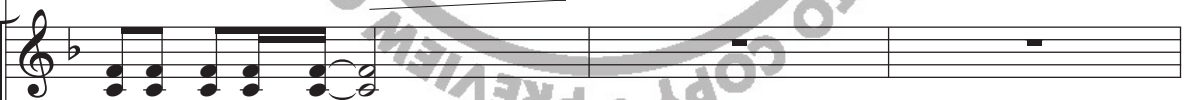
Chords: Eb9, Eb9/D^b, F/C, Gm/C

35

58 2:07



I am not a-shamed of the Gos - pel of Je - sus Christ.



I am not a-shamed.

Piano accompaniment for measures 35-37. The right hand features a melodic line with chords E/C, Gm/C, and Bbm9. The left hand provides a rhythmic accompaniment. A large watermark is visible across the page.

Chords: E/C, Gm/C, B^bm9

Dynamic: *p*

38

mp

For ev-'ry mom-ent His hand has had mer - cy, for all the

Gm11b5 C7sus(b9) F maj7 E♭maj7 F

41

love He's shown in my — life, a sim-ple thanks does-n't say how I'm

B♭maj7 E♭9 Dm9

44

feel - ing, I get tears in my eyes... So as for

G 13 Gm7 B♭2 C C7

47

me, I'm gon-na keep on be - liev - ing in the

F2 Ebmaj7 F B9#5 3

49

One who's been so faith - ful to me. I'm not

Bbmaj7 Eb13 Eb13#11 3

51

out to please this whole world a - round me. I've got my

Dm9 G13#11 3 3 3

53 **59** 3:03

mf

mind on e - ter - ni - ty. That's why

Gm9

C7sus(b9)

Building

55 (SOLO, may ad lib)

I am not a-shamed of the Gos - pel, — the Gos-pel of Je - sus Christ. .

mf CHOIR: unison

div.

I am not a-shamed of the Gos - pel, — Gos-pel of Je - sus Christ. .

unison

F2

Gm
F

Bb
C

C7

mf

58

— I am not a-fraid to be count - ed, — but I'm
unison *div.*
— I am not a-fraid to be count - ed, — but I'm

F B \flat C F Gm F

61

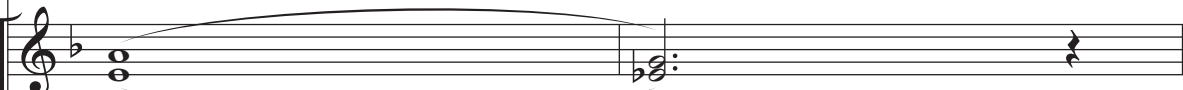
will - ing to give — my life. — See, I'm read -
will - ing to give — my life. —
div.

B \flat C C7 \flat 9 F

63



- y to be all He wants me to be.



Ah



Fmaj7

Cm

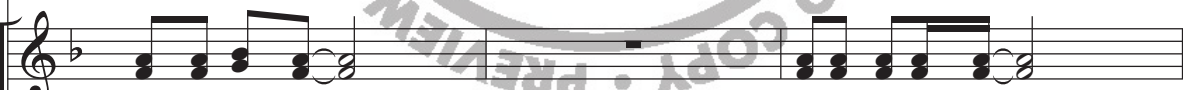
B9^b5



65

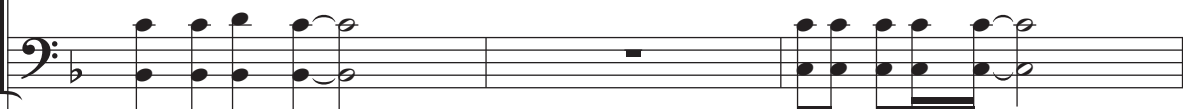


Give up the wrong for the right. I am not a-shamed of the Gos-



Give up the wrong,

I am not a-shamed,



B^bmaj7

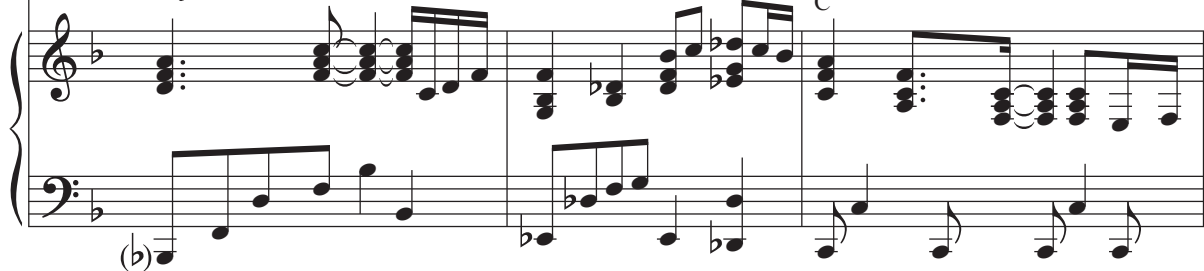
E^b9

E^b9

D^b

F

C



68

60 4:00



- pel. _____ I am not a-shamed. of the Gos - pel _____ of Je - sus



I am not a-shamed. I've got



Chord progression for measures 68-70:

- Measure 68: Gm/C
- Measure 69: F/C
- Measure 70: Gm/C, Bb/C

Musical notation for the piano accompaniment at measures 68-70, showing both treble and bass clefs. The piece includes a large watermark: "ILLEGAL TO COPY • PREVIEW ONLY".

71



Christ. To some _____



too much be - hind _____ me to let this world bind _____ me. To some _____



Chord progression for measures 71-73:

- Measure 71: Fmaj7
- Measure 72: Cm7
- Measure 73: F

Musical notation for the piano accompaniment at measures 71-73, showing both treble and bass clefs. The piece includes a large watermark: "ILLEGAL TO COPY • PREVIEW ONLY".

73

— He's a name, but to me, He's my ev - 'ry_thing.

unison

— He's a name, but to me, He's my ev - 'ry_thing.

unison

B^bmaj7

E^b9

E^b9
D^b

75

I am not a-shamed_ of the Gos - pel.

div.

I am not a-shamed, _

div.

F
C

G^m
C

B^bm

F
C

B^bm
D^b

77

Musical staff with treble clef and key signature of one flat, containing a melodic line for the vocal part.

I am not a-shamed of the Gos - pel of Je - sus

unison

Musical staff with treble clef, containing a vocal line and piano accompaniment.

I am not a-shamed, of Je - sus

Musical staff with bass clef, containing piano accompaniment.

Piano accompaniment section with treble and bass staves. Chords are labeled: F, C, Gm, C, Bb, C, C7.

79 **61** 4:35 SOLO: ad lib

poco rit.

Musical staff with treble clef, containing a vocal line.

Christ.

ff *poco rit.*

Musical staff with treble clef, containing a vocal line.

Christ. I've got

Musical staff with bass clef, containing piano accompaniment.

Piano accompaniment section with treble and bass staves. Chords are labeled: Bbm9, Cm7 Bbm7, Eb, Ab, Bbm9, G, Bbm, Bbmaj7, D7b9.

poco rit.

SOLO cont. ad lib
a tempo
div.

81

too much be - hind_ me to let this world bind_ me to some_

G^bmaj7 D^bm
G^b
ff a tempo

83

unison
_ He's a name, but to me, He's my ev - 'ry thing.
unison

C^bmaj7 E7 E^bm7 Bm D G^b7 D^b Bm6 Bm6 D

85 *SOLO (freely)*

I am not a-shamed_ of the Gos - pel.____

div.

I am not a-shamed, _

unison

G^b
D^b

A^bm
D^b

87 **62** 5:04

I am not a-shamed_ of the Gos - pel.____

I am not_ a-shamed, _

G^b
D^b

A^bm
D^b

G^b E₃ E^bm7

89



I am not a-shamed_ of the Gos - pel.____



I am not a-shamed,_____



G
D

Am
D

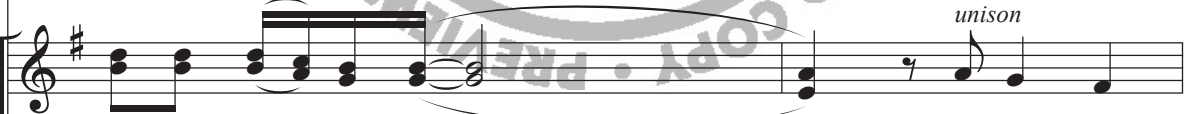


91



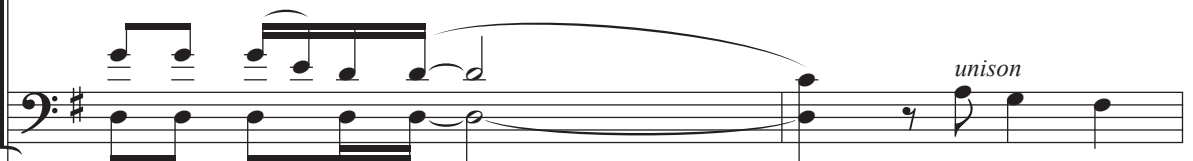
I am not a - shamed of the Gos - pel.

SOLO: ad lib



I am not_ a-shamed,_____ of Je - sus

unison



unison

G
D

Am
D

C
D D7



93 *rit.*

Christ, _____ Je - sus _____

$E\flat$ / G F $E\flat$ maj7 F $E\flat$ maj7 Dm7 $E\flat$ maj7 Dm7 Cm7 Cm A Cm D

95

Christ. _____

N.C. G