

# God Is on the Throne

Words and Music by  
 ED CASH, ANDREW BERGTHOLD,  
 FRANNI CASH, MARTIN CASH,  
 SCOTT CASH, and GLYNN DOLLISON  
 Arranged by Cody Howard McVey

R&B gospel feel (♩ = 64)

**79** D E F#7#9#5 Bm7 Am9 D7 Gmaj9 D2 F#

*mp* (B3 mel.)

4 *mp* SOLO (with freedom)

God is on the throne, He reigns for-ev-er-

Em11 Gmaj7 A D F#7#5 Bm7 Am7 D7

7

more.. Just think a-bout it, just think a-bout it. Mmm

Gmaj9 D2 F# Em11 G A

9

Why should I wor - ry, why should I fear?

D F#7

10

Why should I run when Je - sus is near? I'm

Bm7 Am9 D9

11

safe in His arms, safe in His heart, and noth-ing can take me a-way from His love.

Gmaj7 D2 F# Em11 G A

13

Why should I wor-ry, why should I fear? Why should I run when Je - sus is near? I'm

D F#7#9 F#7b9 Bm7 Am9 Ab7b5

80 0:52

15

safe in His arms, safe in His heart, and noth-ing can take me a-way from His love.

Gmaj9 D2 F# E7 Gmaj7 A

17

God \_\_\_ is on \_\_\_ the \_\_\_ throne, He reigns for - ev - er -

D F#7 Bm7 Am7 D7

19



more. Just think a-bout it, just think a-bout it.

more. Just think a-bout it, just think a-bout it.

*CHOIR mp unison*



Just think a-bout it, just think a-bout it.

Just think a-bout it, just think a-bout it.

*div.*

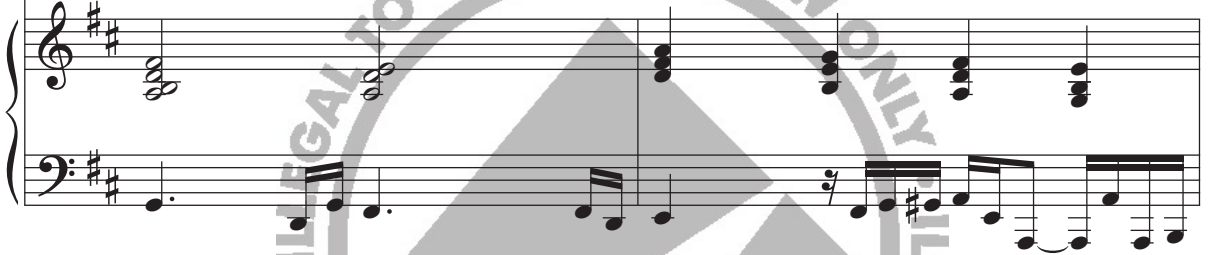


Gmaj9

D2  
F#

Em11

G  
A

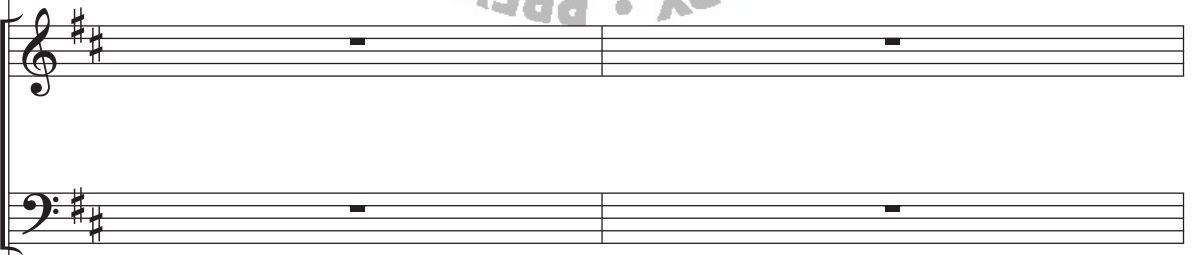


21



God \_\_\_ is al ways \_\_\_ good, He loves like a fa - ther

God \_\_\_ is al ways \_\_\_ good, He loves like a fa - ther



D

F#7#5

Bm7

Am9

D7



23 **81** 1:22



should. Just think a-bout it, just think a-bout it.



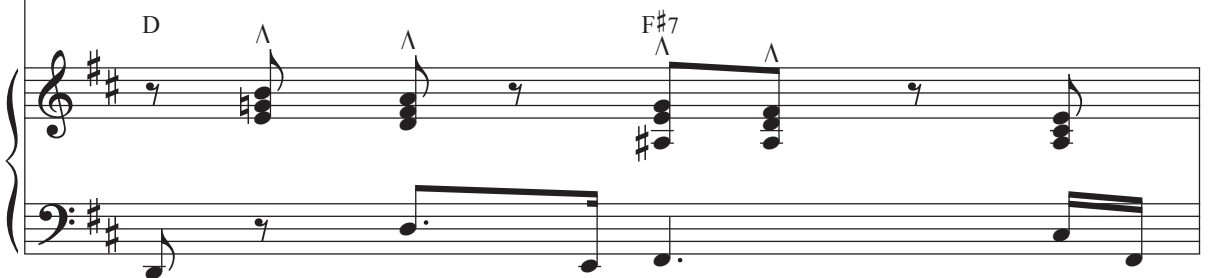
Just think a-bout it, just think a-bout it.



25 *SOLO*



When I am anx - ious, when I'm a - fraid, \_



26



I find the strength when I call \_\_\_\_\_ His name, I'm

Bm7

Am9

D7



27



safe in His arms, safe in His heart, and noth-ing can take me a - way. \_\_\_\_ He's the



G maj7

D2  
F#

Em11

G maj9  
A



29

82 1:48

King of pow-er, King of kings. He is the Lord o-ver ev-er - y - thing To

D F#7#9 F#7b9 Bm7 Am9 Ab7b5

31

Him be the glo - ry, the hon - or and praise, for -

CHOIR *mp*  
For - unison  
add BASSES

Gmaj9 D2 F#

32

ev er and ev - er a - men, al-ways.

*mf* SOLO cont., may ad lib

ev-er and ev-er, a-men, al-ways. God is on the

E9 Gmaj9 A D F#7#9 F#7b9

34

throne, He reigns for-ev - er - more. Just think a-bout it, just

*div.* (mel.)

*div.*

Bm7 Am9 C6 D Gmaj7 D2 F#



36 *unison*

think a - bout it. God is al - ways \_\_\_\_\_

*unison*

Em11 Gmaj9 A D Em D F#9 #5

38 *div.* **83** 2:26

good, He loves like a fath - er should. Just think a - bout it, just

*div.*

Bm7 Am9 D7 Gmaj7 D2 F#

40

SOLO (with freedom)

Hal - le - lu - jah, - He reigns. Hal - le - lu -

think a - bout it.

Em11 G maj7 A D G maj9 F#7#9

42

84 2:37

- jah, - He saves. Hal - le - lu - jah, - al - ways. He's

Bm7 Ab7b5 Am9 D7 G maj9 D2 F#

44

nev-er gon-na let me down.-

CHOIR: unison  
SOLO (cont., may ad lib)  
*mf*

Hal - le - lu - jah, - He reigns. Hal - le - lu -

tenors only

46

- jah, - He saves. Hal - le - lu - jah, al - ways. He's

48

nev-er gon-na let me down. Hal-le-lu - jah, He reigns. Hal-le-lu -

*div.*

*add BASSES*

Em11 Gmaj9 A D2 F#7#9

50

- jah, - He saves. Hal - le-lu - jah, al - ways. He's

**86** 3:07 *unison*

Bm7 Am9 Ab7b9b5 Gmaj9 D2 F# B7#9

52

nev-er gon-na let me down. God is on the

*div.*

Em11 Gmaj9 A D ^ F#7#9 F#7b9

54

throne, He reigns for-ev - er - more.. Just think a-bout it, just

B m7 Am9 C6 D G maj9 D2 F#

56

think a - bout it. God is al - ways —

*unison* *div.*

Em11 G maj9 A Em D D D F#7#9 F#7b9

87 3:37

58

good, He loves like a fath - er should. Just think a-bout it, just

B m7 Am9 D7 G maj7 D2 F#

60 *mp unison*

think a-bout it. Noth- ing can sep-a- rate us from the love of God,

*unison*

Em11 Gmaj7 A D F#7b9#5

*mp*

63 *div.*

no mount - ain, no val - ley, no, no. —

Bm11 Am D7#9#5

64 *unison rit. SOLO (ad lib)*

— Just think a-bout it, just think a-bout it.

Gmaj9 D2 F# E7 Gmaj7 A D

*rit.*