

YEAR OF OUR GOD

From the Prism Music collection *WE SAY YES*

Words and Music by
 HOLLY McWILLIAMS
 and ROGER McWILLIAMS
 Arranged and Orchestrated by
 Bradley Knight

42 Laid-back groove ♩ = 83.5

Ab Eb Bb Cm7 Ab Eb

4 *SOLO mf*

The Spir - it of the Lord is burn - ing with - in _

6

_ me; I hear You call - ing. The roar - ing of heav - en, I can't ig - nore _

8

it. It feels like fire com-ing up - on

B \flat A \flat E \flat

10

me; it must be Your glo - ry. You prom-ised You'd send Your Spir-it to help

B \flat Cm7 A \flat E \flat

43 0:31

12

me. Ho - ly Spir - it, be the fi - re; be the

B \flat A \flat E \flat

SOLOIST and CHOIR
mp

14

flame in - side my soul. You said You'd nev - er leave me. Your Spir - it is up -

B \flat Cm7 A \flat E \flat

16

on me. Ho - ly Spir - it, be the fi - re; be the

B \flat A \flat E \flat

18

flame in - side my soul. You said You'd nev - er leave me. Your Spir - it is up -

B \flat Cm7 A \flat E \flat

mf



on me. The Spir - it of the Lord is burn - ing with - in -



B \flat A \flat E \flat



— me, ful - fil - ling Your prom - ise. Mir - a - cle pow'r, I can't ig - nore — it.



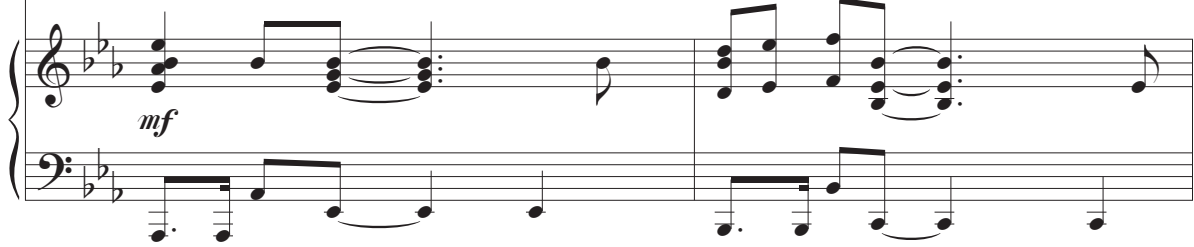
B \flat Cm7 A \flat E \flat B \flat



Vi - sions, dreams, signs and won - ders, — it must be Your glo - ry.



A \flat E \flat B \flat Cm7



mf

SOLOIST sing with ALTOS

Alto mel.

27

Just like You said, Your Spir - it would help me. Ho - ly

f

Ab Eb Bb

29

Spir - it, be the fi - re; be the flame in - side my soul. You said You'd nev - er

f

Ab Eb Bb Cm7

31

leave me. Your Spir - it is up - on me. Ho - ly Spir - it, be the fi - re; be the

Ab Eb Bb Ab Eb

flame in - side my soul. You said You'd nev-er leave me. Your Spir-it is up-

flame in - side my soul. You said You'd nev-er leave me. Your Spir-it is up-

flame in - side my soul. You said You'd nev-er leave me. Your Spir-it is up-

Bb B°7 Cm7 Absus Bb Ab Eb

Bb B°7 Cm7 Absus Bb Ab Eb

1. (to meas. 29) 2. *pronounced "meh"

on me. Ho-ly on me. —

on me. Ho-ly on me. —

1. Bb (to meas. 29) 2. Bb Eb Ebsus Eb Eb⁴

Bb (to meas. 29) Bb Eb Ebsus Eb Eb⁴

46 2:14

TENOR SOLO
mp

This is the year_ of our God, the Hope_

Eb Ebsus Eb Eb⁴ Eb Ebsus

Eb Ebsus Eb Eb⁴ Eb Ebsus

43

— of the world, ju - bi-lee's com - in'. This is the year of our God; the sound -

E♭ Eb⁴ E♭ E♭sus

45

(FEMALE SOLO)

This is the year of our God, the Hope -

(TENOR SOLO)

— of Your voice has me run - nin'. This is the year of our God, the Hope -

CHOIR
mp

This is the year of our God, the Hope -

E♭ Eb⁴ E♭ E♭sus

— of the world, ju - bi - lee's com - in'. This is the year_of our God; the sound_

— of the world, ju - bi - lee's com - in'. This is the year_of our God; the sound_

— of the world, ju - bi - lee's com - in'. This is the year_of our God; the sound_

E \flat

E \flat ⁴

E \flat

Ebsus

cresc.

— of Your voice has me run - nin'. This is the year_of our God, the Hope_

— of Your voice has me run - nin'. This is the year_of our God, the Hope_

— of Your voice has me run - nin'. This is the year_of our God, the Hope_

mf

mf

mf

E \flat

E \flat ⁴

E \flat

Ebsus

mf

51

— of the world, ju - bi-lee's com - in'. This is the year_ of our God; the sound_

— of the world, ju - bi-lee's com - in'. This is the year_ of our God; the sound_

— of the world, ju - bi-lee's com - in'. This is the year_ of our God; the sound_

— of the world, ju - bi-lee's com - in'. This is the year_ of our God; the sound_

E \flat E \flat ⁴ E \flat E \flat sus

53

— of Your voice has me run - nin'. This is the year_ of our God, the Hope_

— of Your voice has me run - nin'. This is the year_ of our God, the Hope_

— of Your voice has me run - nin'. This is the year_ of our God, the Hope_

— of Your voice has me run - nin'. This is the year_ of our God, the Hope_

E \flat E \flat ⁴ E \flat sus C E \flat B \flat

— of the world, ju - bi-lee's com - in'. This is the year_ of our God; the sound_

— of the world, ju - bi-lee's com - in'. This is the year_ of our God; the sound_

cue notes provided in case of range issues

— of the world, ju - bi-lee's com - in'. This is the year_ of our God; the sound_

— of the world, ju - bi-lee's com - in'. This is the year_ of our God; the sound_

Ab2 Eb G Ebsus F Eb G

— of Your voice has me run - nin'.

— of Your voice has me run - nin'.

— of Your voice has me run - nin'.

— of Your voice has me run - nin'.

Ab2 Bbsus Ab2 Eb

48 3:12

59

Ju - bi-lee's com-in'! _____

Ju - bi-lee's com-in'! _____ So Ho - ly Spir-it, _____

Ju - bi-lee's com-in'! _____ Ho - ly

B \flat Cm7 A \flat 2 E \flat B \flat

62

SOLOISTS may sing along and embellish

Spir - it, be the fi - re; be the flame in - side my soul. You said You'd nev - er

Drums continue

leave me. Your Spir - it is up - on me. Ho - ly

leave me. Your Spir - it is up - on me. Ho - ly

leave me. Your Spir - it is up - on me. Ho - ly

Ab2 Eb N.C.

ff

Spir - it, be the fi - re; be the flame in - side my soul. You said You'd nev - er

Spir - it, be the fi - re; be the flame in - side my soul. You said You'd nev - er

Spir - it, be the fi - re; be the flame in - side my soul. You said You'd nev - er

Ab Eb Bb B°7 Cm7 Absus Bb

* pronounced "meh"

leave me. Your Spir - it is up - on me.

leave me. Your Spir - it is up - on me.

leave me. Your Spir - it is up - on me.

Ab Eb Bb

70

This is the year_ of our God, the Hope___ of the world, ju - bi - lee's com - in'.

Ab Eb Bb Cm7

72

This is the year_ of our God; the sound___ of Your voice has me run - nin'.

Ab Eb Bb

74

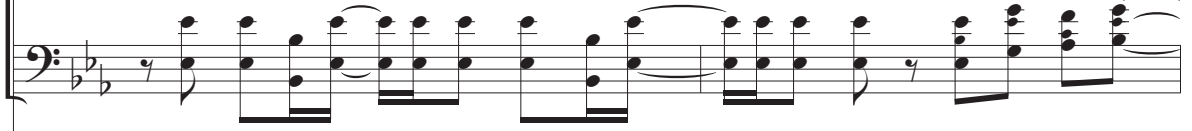
f

This is the year_ of our God, the Hope___ of the world, ju - bi - lee's com - in'.

Ab Eb Bb Cm7



This is the year_ of our God; the sound ___ of Your voice has me run - nin'._

A \flat E \flat B \flat 

Ju - bi-lee's com - in'!

A \flat E \flat B \flat

Cm7

A \flat E \flat 

Ju - bi-lee's com - in'!

B \flat E \flat 2A \flat 2